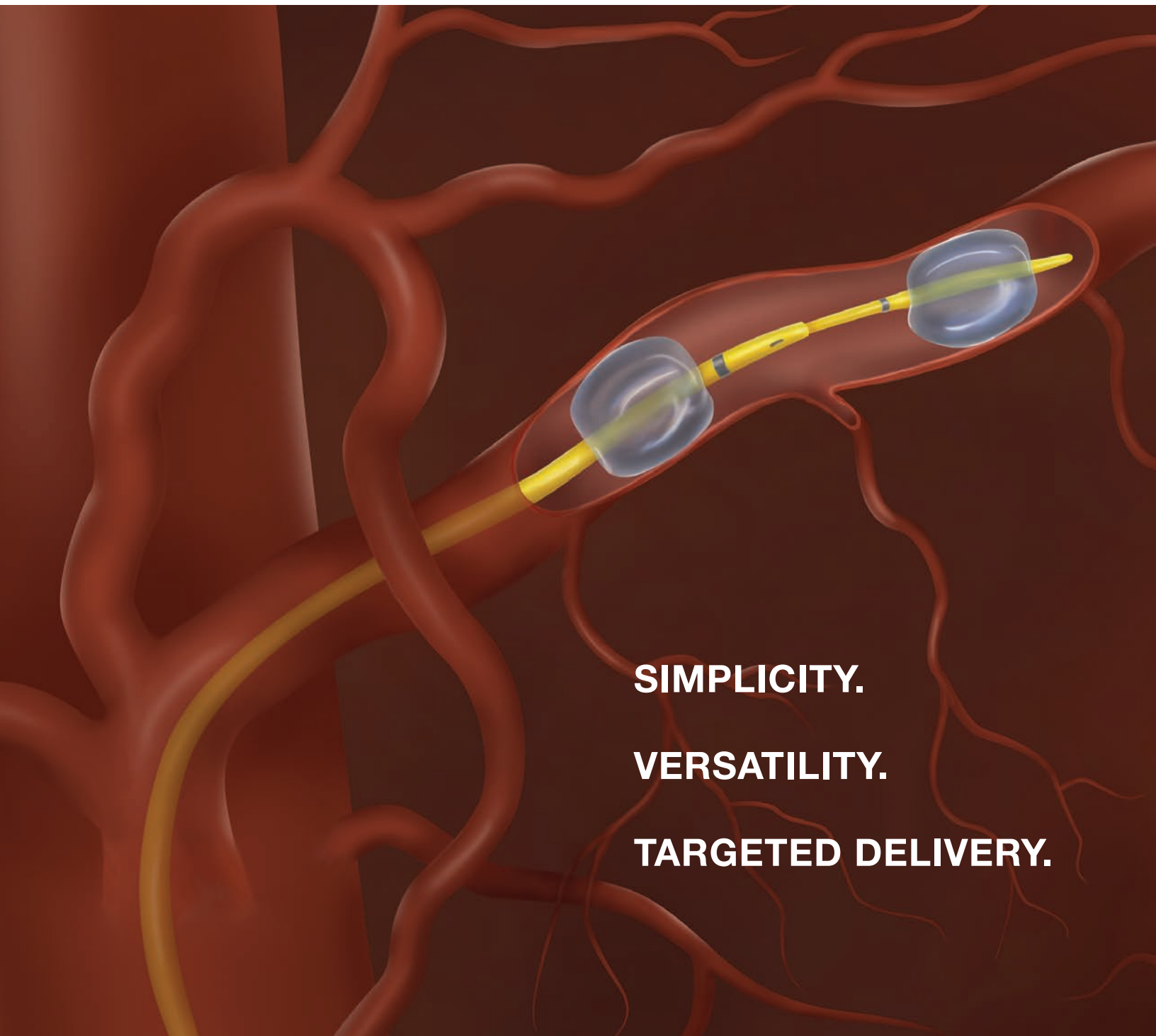




# RenovoCath™ RC120

The Future of Targeted Delivery



**SIMPLICITY.**

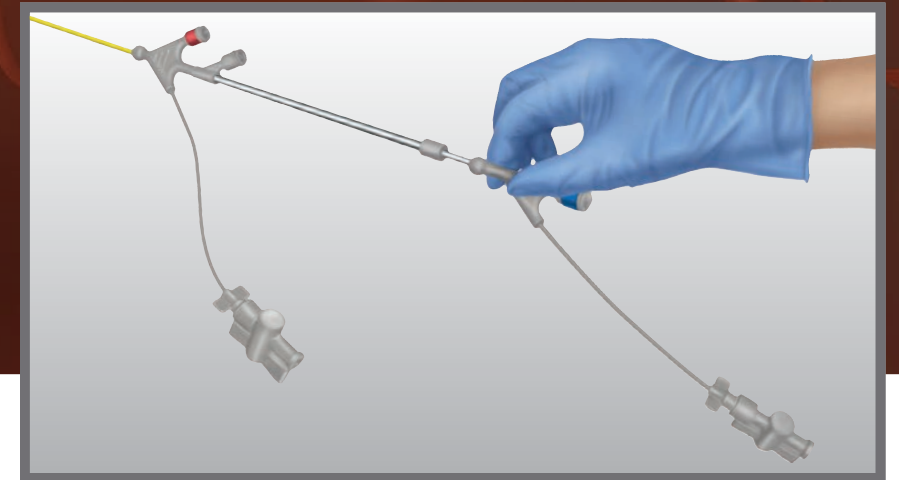
**VERSATILITY.**

**TARGETED DELIVERY.**

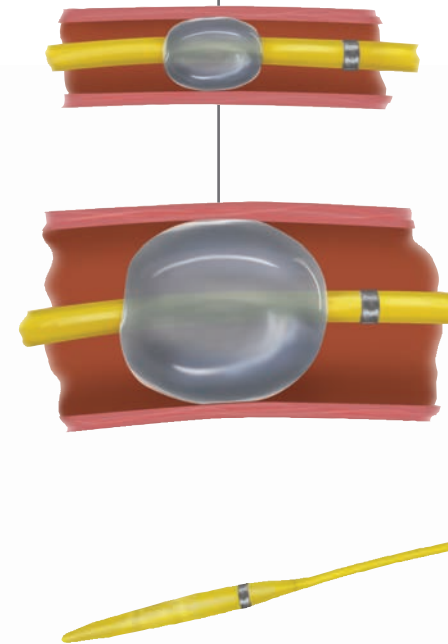
**THE RENOVOCATH™ RC120 CATHETER** is specifically designed for targeted delivery of fluids, including diagnostic and therapeutic agents, into selected sites in the peripheral vascular system. The proximal and distal occlusion balloons enable isolation of the vascular site while allowing infusion of fluids in a controlled environment — exactly where you need them. The two balloons are inflated and positioned independently using the catheter's uniquely designed two-part handle for maximum control under fluoroscopic guidance.

**SIMPLICITY**

Two-part handle for easy control of balloon distance.

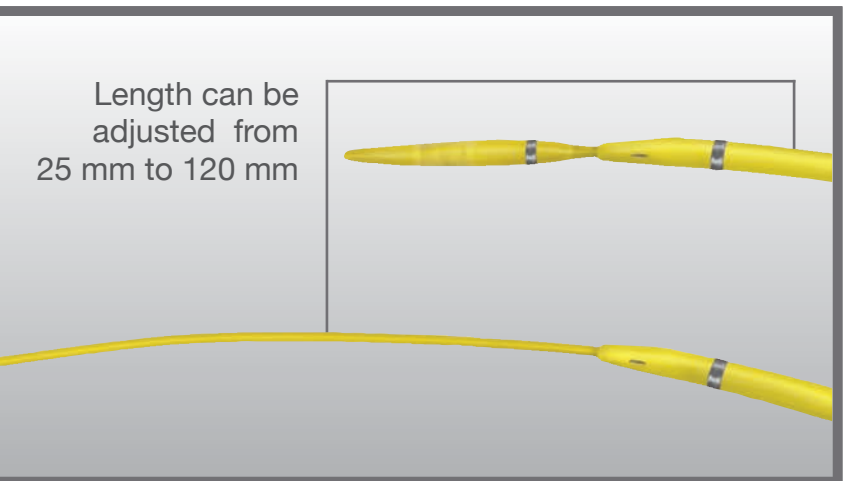


Adjustable balloon size for vessel diameters from 4 mm to 11 mm



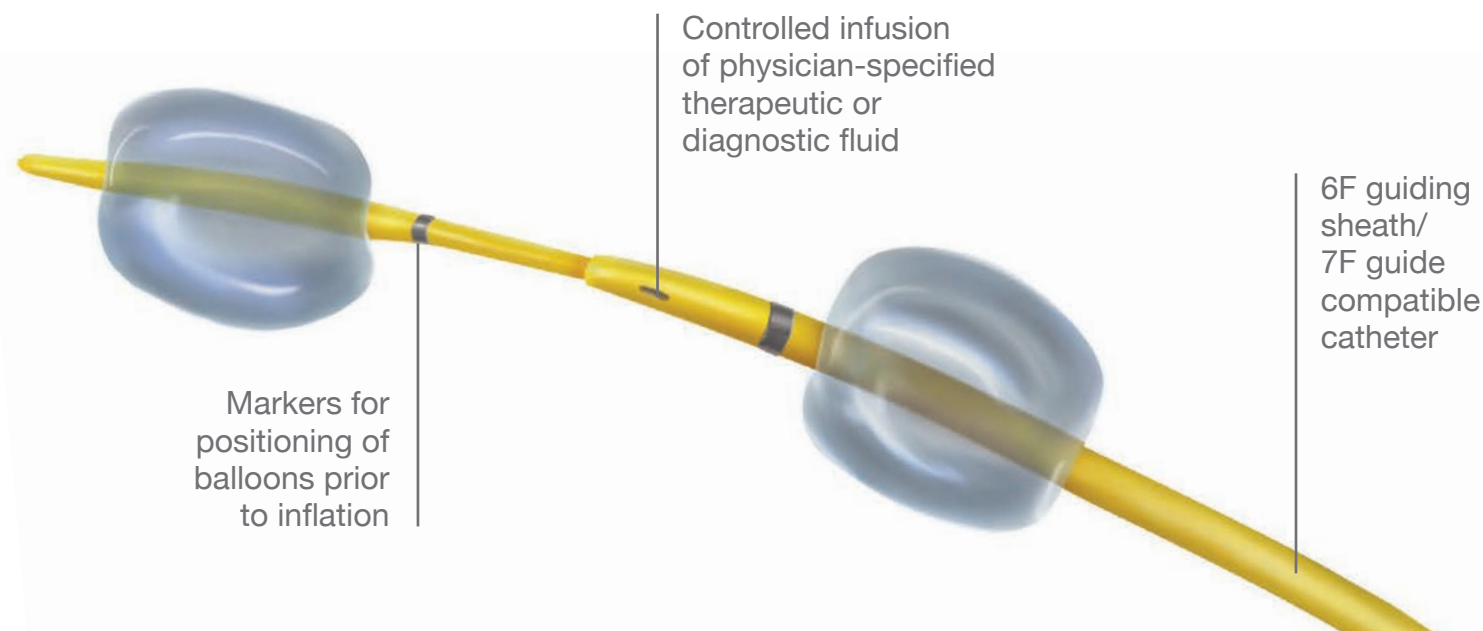
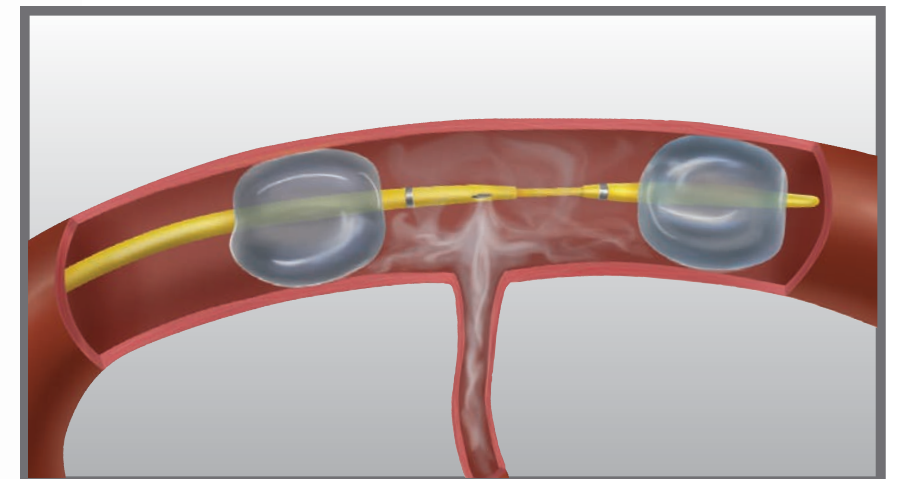
**VERSATILITY**

Operator controlled adjustable occlusion length.



**TARGETED DELIVERY**

Dual occlusion balloons for precise infusion. Closed seal system ensures infusate is confined between the balloons.



**BALLOON COMPLIANCE FOR EXCELLENT PERFORMANCE IN THE PERIPHERAL VASCULATURE**

Inflation Volume Average	Balloon Diameter
0.12 cc	4 mm
0.17 cc	5 mm
0.22 cc	6 mm
0.33 cc	7 mm
0.43 cc	8 mm
0.63 cc	9 mm
0.76 cc	10 mm
1.05 cc	11 mm

NOTE: Maximum volume tested is 1.07cc

## DEVICE CHARACTERISTICS

Model Number	Balloon Diameter	Balloon Distance	Effective Length*	Guide Wire Compatibility	Guiding Sheath Compatibility
RC120-DB-1111	4 – 11 mm (adjustable)	25 – 120 mm (adjustable)	76 – 86 cm (adjustable)	0.014 in	6F

\* Effective length is the length of the catheter that can be inserted into the body and is measured from the distal edge of the strain relief to distal tip. The overall length is approximate.

**DELIVERING WHAT MATTERS:  
targeted therapeutic and diagnostic infusion.**

### RENOVOCATH™ RC120 SAFETY INFORMATION

#### Indications for Use

The RenovoCath RC120 Catheter is intended for the isolation of blood flow and delivery of fluids, including diagnostic and/or therapeutic agents, to selected sites in the peripheral vascular system. The RenovoCath RC120 is intended for general intravascular use in the peripheral vasculature in arteries 3mm and larger. The RenovoCath RC120 is intended for use in arteries at least 3mm in diameter for vessel entry and to occlude vessels ranging from 4mm to 11mm in diameter. The diagnostic and/or therapeutic agents are to be used in accordance with specifications outlined by the respective agent manufacturer.

#### Contraindications

It is the responsibility of the physician to determine whether any anatomical or clinical characteristics of the patient would contraindicate the use of this device. The RenovoCath RC120 Catheter is not intended for use in coronary or intracranial arteries.

*For additional information please consult the IFU.*



RenovoRx Inc.  
4546 El Camino Real  
Suite 282  
Los Altos, CA 94022  
Ph. 650.284.4433  
www.renovorx.com